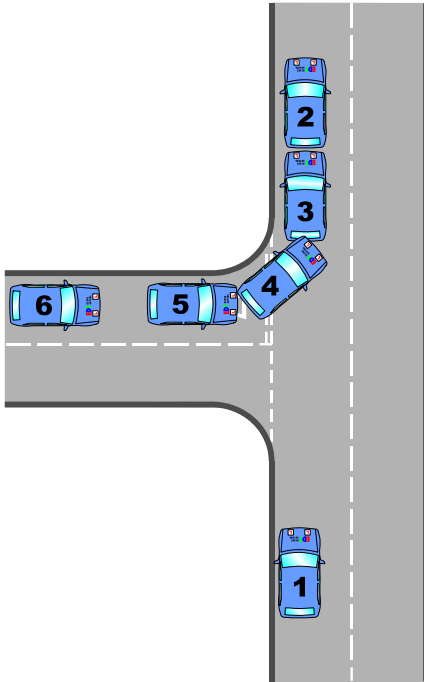


REVERSE TO THE LEFT



1. When requested, pull up before the junction on the left. Apply the handbrake and select neutral and wait for instructions.
When asked to move off, prepare the car as you would do normally. **Take all round observations** and move off.
As you drive past the mouth of the junction, look to make sure that the junction is clear and check what type of corner the junction is.
Check your mirror and consider a signal. If a signal is required, don't signal too soon.
2. Pull up on the left, about 12 to 18 inches (30 to 45 cms) from the kerb (depending on the shape of the junction) and far enough forwards so that you can see the junction in the interior mirror (1 to 2 car lengths). Don't worry about blocking driveways as you won't be stopping long. Apply the handbrake and select neutral.
Remove your seatbelt and adjust seating position, if necessary. **DO NOT ADJUST YOUR SEATING POSITION WITH THE CAR IN GEAR.**
Prepare the car to move off as you would do normally only now select reverse gear. Consider whether the junction is on the level, uphill or downhill.
Take all round observations, starting over the right shoulder. If there is any traffic around, wait for it to clear. Look around once more.

Looking through the rear window, reverse in a straight line until you reach the point-of-turn. The point-of-turn depends on the shape of the junction, but is usually when the start of the corner is level with the back wheel.

3. Once at the point-of-turn, stop and take all round observations. If there is anything coming or pedestrians on the pavement, you must wait and let them pass. Take all round observations again.
While reversing, apply enough left-hand steering to keep the back wheels parallel with the kerb. Look at the kerb/side of the road through the side window. You may, occasionally, glance in the nearside mirror to check your position with the kerb.
4. Once you are half way round the corner, slow yourself down so you can take all round observations again. If a road user is approaching on the main road, wait and let them pass. If a road user is coming out of the junction, you need to pull forward into the starting position, let them clear the junction and re-start the manoeuvre.
5. Continue reversing until the kerb has returned to the rear window and the car is almost parallel with the kerb. Straighten the steering slowly.
6. Reverse back into the junction for two to three car lengths.
Keep looking out of the rear window until the car has completely stopped. Apply the handbrake, select neutral and wait for instructions to proceed.